



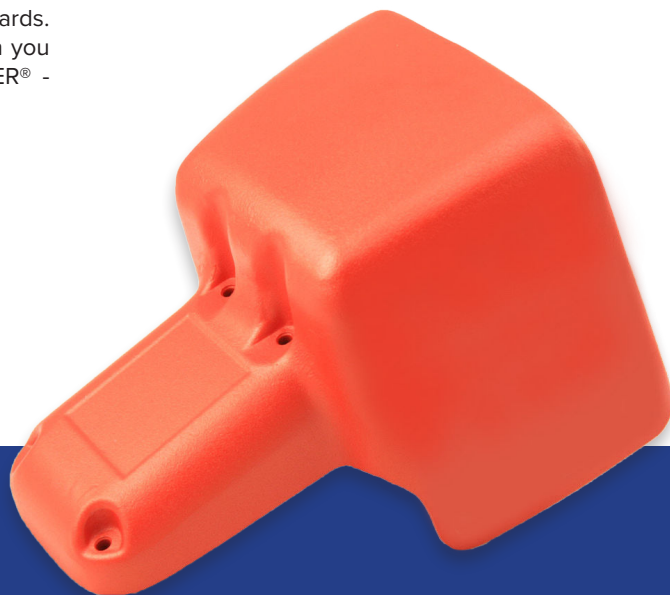
HEAVY DUTY SHIELDS

Designed to serve and protect, Linemaster's heavy duty foot switch shields perform double duty for manufacturing users, O.E.M.s and distributors everywhere. This is an exclusive feature for our popular Hercules, Atlas and Anti-Trip foot switches. The oversized "O" and "OX" models will easily accommodate your bulkiest safety shoes and metatarsal guards. LINEMASTER® foot switch shields create a durable barrier between you and some of the toughest environments. Only From LINEMASTER® - American made innovation at work.



LINEMASTER Switch Corporation
Tel (860) 974-1000

29 Plaine Hill Rd, P.O. Box 238
Woodstock, Connecticut
06281-0238 USA
Fax (800) 974-FOOT(3668)



HEAVY DUTY SHIELDS

FEATURES

- Rugged cast aluminum alloy construction
- Resistant to impact
- Opening designed to easily accommodate most footwear
- Standard color is highly visible alert orange
- Special variations available in production quantities
- Entire foot switch is covered
- Accepts a wide range of foot switch models
- Oversized "OX" model provides additional 3/4" opening height (as compared to the "O" shield)



FULL SHIELD

SIZE (HxWxD): 4.00 x 3.80 x 10.00 In.

WEIGHT: 2.00 lbs.

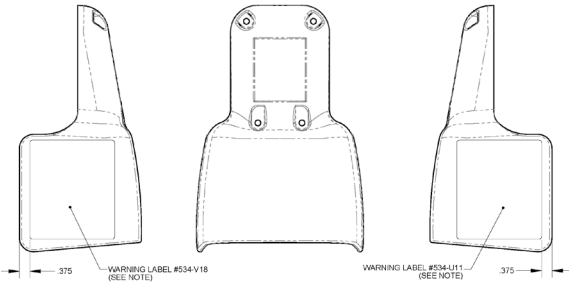


"O" SHIELD

SIZE (HxWxD): 2.00 x 1.50 x 3.10 In.

WEIGHT: 2.25 lbs.

FULL SHIELD 534-Z24

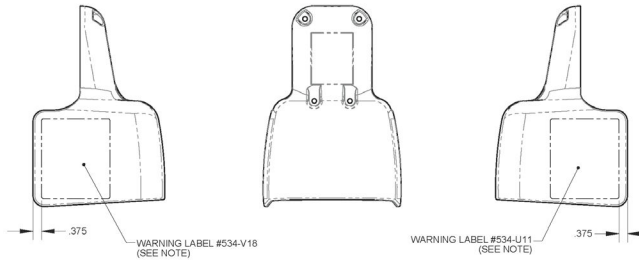


"OX" SHIELD

SIZE (HxWxD): 2.00 x 1.50 x 3.10 In.

WEIGHT: 2.50 lbs.

"O" SHIELD 534-B25

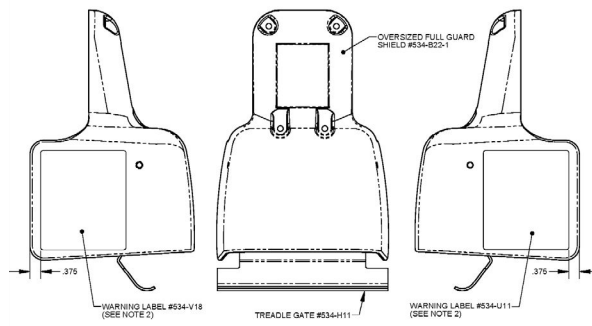


GATED FULL SHIELD

SIZE (HxWxD): 2.00 x 1.50 x 3.10 In.

WEIGHT: 2.85 lbs.

GATED FULL SHIELD 534-C25



GATED O SHIELD

SIZE (HxWxD): 2.00 x 1.50 x 3.10 In.

WEIGHT: 2.25 lbs.