

NAUTILUS FOOT SWITCH

The Nautilus foot switch is Linemaster's top choice for those seeking a military grade foot switch. The Nautilus offers the end user a rugged shell that is built to last. A completely waterproof housing that is corrosion resistant allows for use in the harshest environments. Although the Nautilus is used in various applications, the most popular places it is used is on communication equipment and military vehicles. The Nautilus is the switch trusted by many. Only from LINEMASTER® - American made innovation at work.



LINEMASTER Switch Corporation
Tel (860) 974-1000

29 Plaine Hill Rd, P.O. Box 238
Woodstock, Connecticut
06281-0238 USA
Fax (800) 974-FOOT(3668)



NAUTILUS FOOT SWITCH

FEATURES

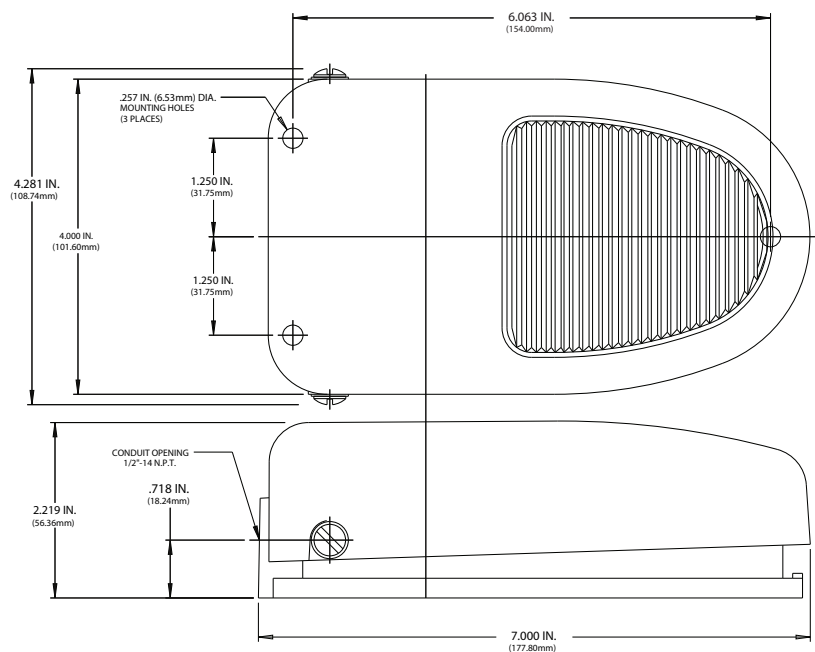
- Rugged aluminum casting is painted gray
- Military grade design
- Piston type actuator sealed with O-rings
- 1/2"-14 N.P.T. threaded conduit entry
- Electrical contacts are sealed in a "well"
- Corrosion resistant housing & components
- 3 mounting holes provided for rigid mounting to floor or equipment
- Non-skid basepads available
- Custom colors available upon request - Special order





SINGLE

SIZE (HxWxD): 2.22 x 4.25 x 7.00 In.

WEIGHT: 2.73 lbs.



AGENCY APPROVALS	EN 60529 DEGREE OF PROTECTION	CATALOG NUMBER	DESCRIPTION	CIRCUIT	FORM	ELECTRICAL RATINGS	SPECIFICATIONS
	IP68	WP-541-SC	Momentary	SPDT	C	20 A 125-250 VAC 1 H.P. 125-250 VAC 10 A 28 VDC 1/2 A 125 VDC 1/4 A 250 VDC Heavy Pilot Duty 250 VAC Max.	NEMA Type 1, 2, 4, 6, 6P & 13 UL Enclosure 1, 2, 4, 6, 6P & 13 Meets IEC 60601-2-2
	IP68	WP-541-DC	Maintained	SPDT	C	15 A 125 VAC 10 A 250 VAC	