

# CLASSIC IV

## FOOT SWITCH



- ▲ The LINEMASTER® Classic IV foot switch is a versatile foot switch that can be utilized in a wide range of applications from medical to medium duty industrial. The rugged cast aluminum housing offers an waterproof IP68 Degree of Protection. Stock single and twin versions are available with or without a foot guard. The guarded versions offer a heavy gauge steel full guard that covers the entire foot. Custom variations are available and built to the user's specifications. Do you have special requirements? Please contact Linemaster for a quotation for a custom variation built to your specifications, including cordset, paint finish and labeling.



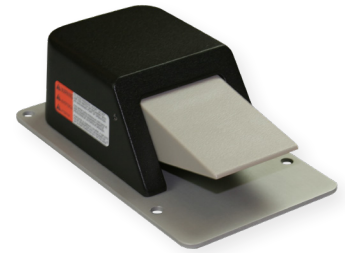
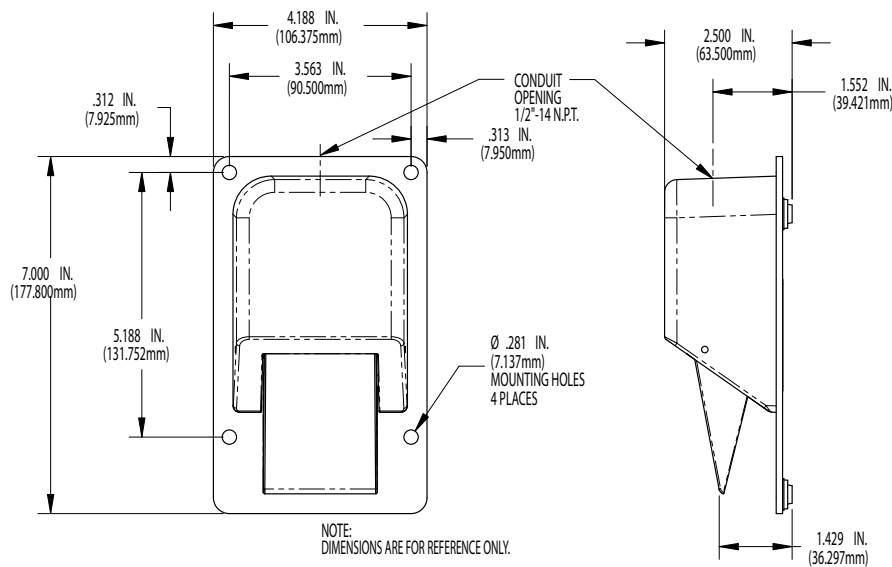
LINEMASTER Switch Corporation  
Tel (860) 974-1000

29 Plaine Hill Road, P.O. Box 238  
Woodstock, Connecticut 06281-0238 USA  
Fax (800) 974-FOOT(3668)

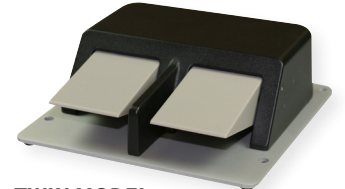
[www.linemaster.com](http://www.linemaster.com)

## FEATURES:

- One Piece Cast Aluminum Housing
- Single Stage Momentary Contact
- Non-Skid Feet To Minimize Movement
- Divider Bar on Twin Models aids in Reducing Accidental Operation of Multiple Pedals at Once
- Single Pedal 1/2"-14 N.P.T. Threaded Conduit Opening is Standard
- Twin Pedal 3/4"-14 N.P.T. Threaded Conduit Opening is Standard
- Heavy Gauge Steel Full Guard Available
- EN 60529 Degree of Protection IP68
- Environmental Protection of NEMA Types 1, 2, 4, 6, 6P & 13



**SINGLE MODEL**  
 SIZE: 4.188"W x 2.5"H x 7"D  
 WEIGHT: 1.75 lbs.



**TWIN MODEL**  
 SIZE: 7.375"W x 2.625"H x 7"D  
 WEIGHT: 3.625 lbs.



**GUARDED SINGLE MODEL**  
 SIZE: 6"W x 4.5"H x 7"D  
 WEIGHT: 6 lbs.



**GUARDED TWIN MODEL**  
 SIZE: 11"W x 4.5"H x 7"D  
 WEIGHT: 10 lbs

Agency Approvals	Catalog No.	Description	Type	Circuit	Form	Electrical Rating
UL SP CE	88SH1-05	Momentary	Guarded	SPDT	C	16A 125-250 VAC 1/2 H.P. 125-250 VAC 250 VAC Maximum
UL SP CE	88SH2-05	Momentary	Guarded	DPDT	C	
UL SP CE	TWIN 88SH1-05	Momentary	Guarded	Each Pedal SPDT	C	
UL SP CE	TWIN 88SH2-05	Momentary	Guarded	Each Pedal DPDT	C	
UL SP CE	88SN1-05	Momentary	Unguarded	SPDT	C	
UL SP CE	88SN1B-05 <sup>1</sup>	Momentary	Unguarded	SPDT	C	
UL SP CE	88SN2-05	Momentary	Unguarded	DPDT	C	
UL SP CE	TWIN 88SN1-05	Momentary	Unguarded	SPDT	C	
UL SP CE	TWIN 88SN2-05	Momentary	Unguarded	DPDT	C	

<sup>1</sup> 8 ft. 14/3 cord without plug, green lead grounded.