

LEKTRO-LOK CAT. NO. L-2-S Foot Operated Switch

WIRING =====

1. **⚠ WARNING: TO AVOID PERSONAL INJURY, DO NOT USE THIS SWITCH ON MACHINERY WITH AN UNGUARDED POINT OF OPERATION.**
⚠ READ WARNING STATEMENT on reverse side of this page.
2. When wiring up this device make sure **POWER IS OFF AND LINES ARE DEAD.**
3. **MAXIMUM FUSE RATING:** Amperage and voltage not to exceed nameplate rating – Quick Acting.
4. Supply cord with flexible conductors (LEADS) for soldering to the interior snap switches to be prepared as follows:

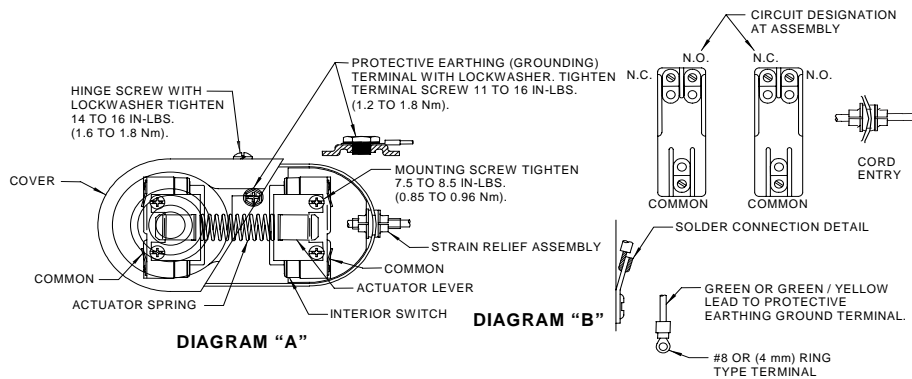
Strip outer jacket 6 ¼ inches (158,75 mm) long.
Leads to far end interior switch are 6 ¼ inches (158,75 mm) long.
Lead to protective earthing (GROUNDING) terminal is 6 ¼ inches (158.75 mm) long.
Leads to cord end interior switch are 1 ½ inches (38,10 mm) long.
Jumpers between interior switches are 7 ¼ inches (184,15 mm) long.

NOTE: These lengths may vary slightly due to cord construction.

Strip inner leads 5/16 inch (7,9 mm) and tin. Form 180° loops and trim excess after making a mechanical connection and prior to soldering as shown in **DIAGRAM "B"**.

Use special purpose crimping tool to apply the ring terminal.

FOR CE MARKED SWITCHES NOTE THE FOLLOWING: The grounding conductor must be green/yellow in color and be long enough such that the grounding terminal will be the last terminal to take the strain, should the strain relief fail. A cord guard or bend relief must be provided that extends beyond the cord clamp at least five times the overall diameter of the flexible cord.



5. Remove the hinge screws and cover; see **DIAGRAM "A"**. Please note insulation pieces, actuators and actuator spring are oriented in the event you choose to remove the interior switches for soldering.
6. **SOLDER CONNECTIONS AS SHOWN: SEE DIAGRAM "B"**.
NOTE: The circuit designations shown in **DIAGRAM "B"** are at assembly. The interior switches are reverse actuated in the foot switch housing. For example, the normally closed terminal marking molded into the interior switch body will produce a normally open circuit when the interior switch is assembled in the foot switch housing.
7. Assemble strain relief to supply cord as shown in **DIAGRAM "A"** (or appropriate equivalent) and reassemble above components.
8. **CLEANLINESS** must be observed during installation and in use.
On a **REGULAR BASIS** inspect foot switch frequently to guard against wear, damage, unlawful alterations or removal of guards, or for unusual enclosure deterioration and the like. Inspect the entire length of the connecting cord (or wiring system) from where it enters the foot switch to the equipment it's wired up to for wear, loose strain relief connections and the like.
DO NOT OPERATE the foot switch if any of the above is observed or if the nameplate or warning label has been obscured or removed.

It is **IMPERATIVE** that inspection authorities and users exercise more than ordinary care with regard to installation and maintenance and that this information sheet be made available to the end user, operators, maintenance personnel and to others responsible for proper installation and safe operation of this foot switch.

ADDITIONAL COPIES of this information sheet and warning labels are available upon request.

WARNING

Form 516-H8 Rev. G

USE OF FOOT CONTROLS ON MACHINERY LACKING EFFECTIVE POINT OF OPERATION SAFEGUARDS CAN CAUSE SERIOUS INJURY TO THE OPERATOR.

Foot controls should only be used where "Point of Operation" and "Pinch Point" guarding devices have been properly installed and are utilized so that it is **IMPOSSIBLE** for the operator's hands or fingers to remain within the point of operation during the machine cycle.

IT IS THE RESPONSIBILITY OF THE USER to determine the suitability of a foot control for the user's intended use and to determine that the foot control chosen by the user and wiring up and installation of same will comply with all Federal, State and Local safety and health regulations and codes.

Due to the unlimited variety of business equipment, instruments, machines and vehicles on which our foot switches are used, the thousands of standards, and customers' varying interpretations of the standards covering these applications, it is impossible for **LINEMASTER** personnel to be experts on standards and requirements for all these products. We offer over 150 stock foot switch models and guards plus a large variety of specials, which are made to customer specifications. We can advise you what is available in our foot switch line and you can examine models to see what meets your needs. We believe our customers' engineering departments should be the qualified experts in their own product field and know what specifications or details they may require in a foot switch for their equipment. If one of our stock models meets their needs, they can specify it, or possibly ask for a modification of a stock model if that is required.

SHOULD YOU HAVE ANY QUESTIONS OR IF ANY OF THE ABOVE WARNING IS UNCLEAR, PLEASE CALL LINEMASTER SWITCH CORPORATION.

(860) 974-1000; FAX (860) 974-0691 OR (800) 974-3668; www.linemaster.com.

READ INSTRUCTIONS on reverse side of this page.

DEFINITIONS:

POINT OF OPERATION - The point or area of the machine or equipment where the work piece or material is actually positioned and work is being performed during any process such as cutting, shearing, punching, forming, welding, riveting, assembling, etc..

PINCH POINT - Any point at which it is possible for a portion of the body to be caught and injured between moving machine or equipment or work piece parts.

FORM # 516-H8

NOTE:

BLACK PRINTING ON 6.5" x 10" WHITE PAPER.

FOLDED SIZE: 2.5" x 3.25" WITH WARNING OUT.

BOTH SIDES OF FORM MUST BE ORIENTED THE SAME.

DR: ADG **DATE:** 02-18-98 **APPV.:** RDC **DATE:** 02-18-98

REVISIONS:

LEVEL	DATE:	DESCRIPTION
B	02-18-99	CHANGED FROM CADRA FILE TO A DOCUMENT FILE (ECN 003406)(ADG)
C	05-11-01	ADDED NOTE FOR CE MARKED FOOTSWITCHES AND VIEW OF CORD ENTRY ON SHEET #1. MADE CLEANLINESS NOTE #7. REVISED NOTE #3 MAKING GROUNDING TERMINAL 6 ¼; WAS 3 ¾. MOVED 516-H8 REV C TO TOP LEFT SIDE OF PAGE IT WAS ON BOTTOM OF PAGE. (ECN 006810)(JTL)
D	01-21-02	REVISED NOTE #6 TO SAY AS SHOWN IN DIAGRAM "A"; WAS AS CHOWN. (ECN 008480)(JTL)
E	01-08-03	ADDED OVER CURRENT NOTE. (ECN 008001) (KWH)
F	01-17-03	REVISED NUMBERING ON SHEET 1. (ECN 010451)(JTL)
G	06-18-09	See revision page @ F:\Files\Revision Pages\516